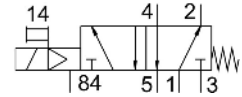
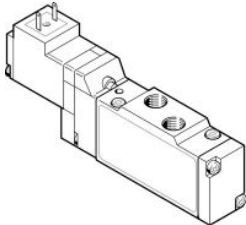


Solenoid valve MEH-5/2-1/8-P-B

Part number: 173129

FESTO



Data sheet

Feature	Value
Valve function	5/2-way, monostable
Type of actuation	Electric
Construction width	17.8 mm
Standard nominal flow rate	600 l/min
pneumatic working port	G1/8
Operating voltage	24V DC
Operating pressure	2.5 bar ... 8 bar
Design	Piston gate valve
Type of reset	Mechanical spring
Approval	c UL us - Recognized (OL)
Degree of protection	IP65
Nominal size	5 mm
Grid dimension	18 mm
Exhaust-air function	With flow control option
Sealing principle	Soft
Mounting position	optional
Manual override	Detenting via accessory
Type of piloting	Pilot actuated
Pilot air supply	Internal
Flow direction	Non-reversible
Symbol	00991035
lap	Positive overlap
Pilot pressure	2.5 bar ... 8 bar
b value	0.36
C value	2.55 l/sbar
Switching time off	28 ms
Switching time on	10 ms
Duty cycle	100%
Characteristic coil data	24 V DC: 1.5 W
Operating medium	Compressed air to ISO 8573-1:2010 [7:4:4]
Note on operating and pilot medium	Lubricated operation possible (in which case lubricated operation will always be required)
Vibration resistance	Transport application test with severity level 1 to FN 942017-4 and EN 60068-2-6
Shock resistance	Shock test with severity level 2 to FN 942017-5 and EN 60068-2-27
Corrosion resistance class CRC	2 - Moderate corrosion stress

Feature	Value
Storage temperature	-20 °C ... 40 °C
Media temperature	-5 °C ... 50 °C
Sound pressure level	75 dB(A)
Pilot medium	Compressed air to ISO 8573-1:2010 [7:4:4]
Ambient temperature	-5 °C ... 50 °C
Product weight	105 g
Electrical connection	Plug pattern type C to industry standard, 9.4 mm Plugs Square design
Type of mounting	On manifold rail
Pilot exhaust port 82/84	Sub-base
Pneumatic connection, port 1	Sub-base
Pneumatic connection, port 2	G1/8
Pneumatic connection, port 3	Sub-base
Pneumatic connection, port 4	G1/8
Pneumatic connection, port 5	Sub-base
Note on materials	RoHS-compliant
Material seals	HNBR NBR
Material housing	Die-cast aluminium